



PRiMAX



Consumer
Technology
Association

2024 PRODUCT CATALOGUE

CONTENT CREATION



Control DECK XLR | A Must Have for Content Creators

Streamline your digital tasks with Control DECK XLR, the ultimate command center for gamers, streamers, content creators, and hybrid workers

Main Features

- **Mission Control:** Centralized control with active live data tiles for on-the-fly adjustments and multi-action auto-switch capabilities.
- **Software-Defined Hardware:** Flexible and customizable controls for a tailored user experience, integrating seamlessly with other existing software suite.
- **Ecosystem-Bonded Hardware:** Designed for interoperability within a diverse digital ecosystem, supporting a range of applications and workflows.
- **Sound Precision:** XLR interface with a 24-bit sample rate, supporting 48/96 kHz for crystal-clear audio capture and playback.
- **Interactive Controls:** Features display keys with 123 x 123-pixel resolution and a sizable 18.5 x 18.5 mm key area for comfortable and precise command execution.
- **Durability:** Built to last with 1M cycles of rigorous use.



WebCaster Air | Audio in your Control

Elevate your podcasts with this all-in-one console, blending ease and quality for all creators, delivering studio sound on a budget

Main Features

- **Extended User Interface via iPhone:** Control your recordings with ease using your iPhone for real-time adjustments and monitoring.
- **Onboard DSP with Presets:** Achieve the perfect sound with user-friendly presets for any recording scenario.
- **Smart Gain, Smart Gate, Anti-Clipping:** Ensure flawless audio with features that automatically balance levels, reduce noise, and prevent distortion.
- **Rich Audio Effects:** Elevate your content with a suite of effects including EQ, reverb, and compression.
- **Affordable Excellence:** Enjoy premium features and exceptional audio quality at an accessible price point.



A person is shown in profile, speaking into a microphone. They are holding a black WebCaster Studio console with various buttons and knobs. In the background, a smartphone is mounted on a stand, displaying a live stream of the person. A white audio interface is also visible on the desk.

WebCaster Studio | Quality Live Streaming Made Easy

A creation console with iPad for video live streaming and production

Main Features

- **More Audio I/O:** Dual XLR/6.3mm inputs and two headphone outputs for versatile connectivity.
- **Enhanced Streaming App:** Upgraded software for improved live-streaming performance.
- **Advanced Audio Features:** Includes Smart Gain, Anti-Clipping, Smart Gate, and Effects for superior sound management.
- **Intuitive Multimedia Control:** Easy manipulation of text, images, and video effects.
- **USB UAC Support:** Compatibility with extendable USB audio devices.
- **Affordable:** Cost-effective without compromising on quality.



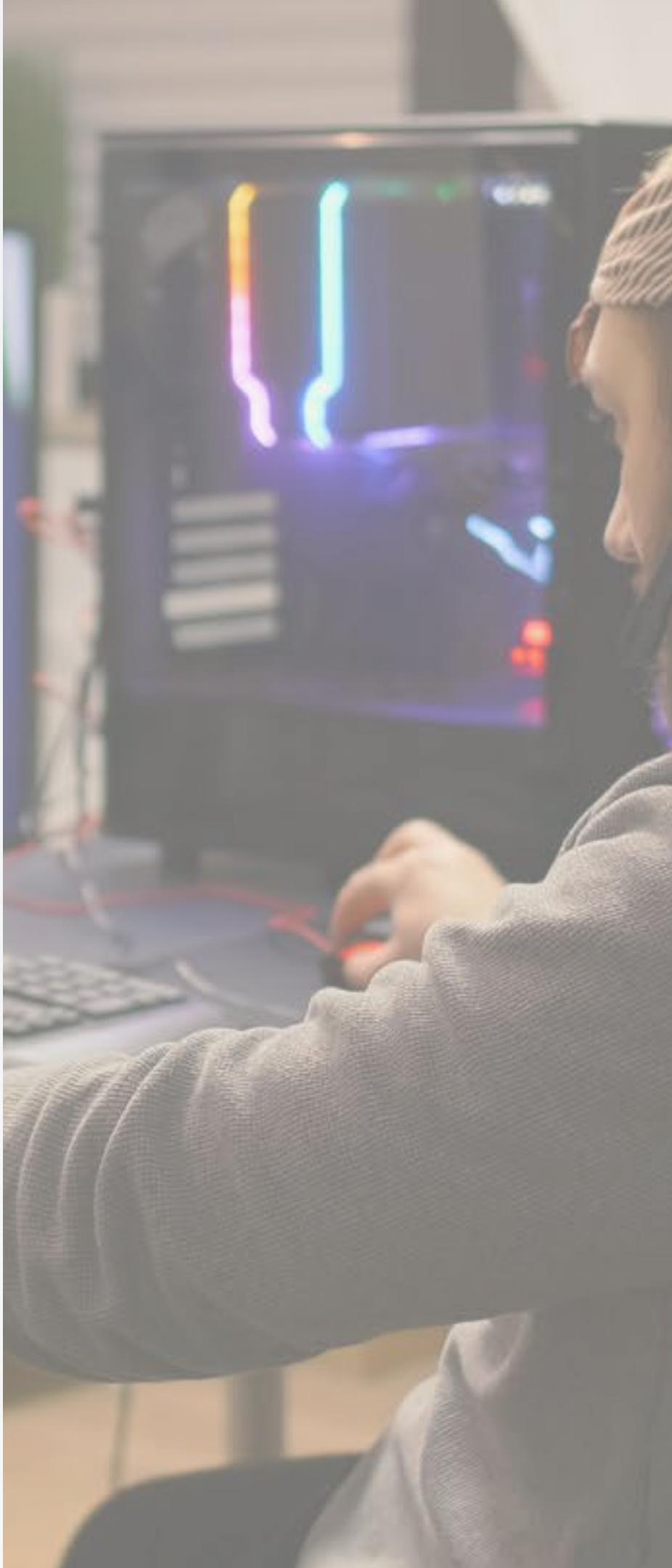
Wireless Gaming Headset (Pro)

Dive into your games with full-spectrum sound, all in a feather-light build with a removable mic for tailored use

Main Features

- BT / 2.4GHz dual-mode
- 40mm Neodymium magnet driver
- Flip to mute cardioid microphone
- Fabric soft ear cushions
- 20 working hours
- 230g light weight design

Item	Specification
Connectivity	BLE 5.0, Wireless 2.4GHz (USB-A)
Compatibility	PC and PS 4&5, BT devices Switch through BT
Dimension (L x W x T)	225 x 175 x 90 (mm)
Weight	230 g
Play time (hr)	20+
Driver specification	<ul style="list-style-type: none">• Size: 40 mm• Frequency response: 20 Hz ~ 20k Hz• Sensitivity: 115 dB SPL/mW
Microphone specification	<ul style="list-style-type: none">• Size: 6mm• Frequency response: 100 Hz~ 10k Hz



Wireless Gaming Headset (Elite)

Discover top-tier wireless gaming audio with unmatched sound and comfort, engineered for immersive gameplay

Main Features

- **Tri-Mode Connectivity:** Bluetooth, 2.4GHz, and USB-C.
- **Immersive Audio Mixing:** Blend game and voice audio.
- **40mm Neodymium Drivers:** Crisp and powerful sound.
- **Dual Noise Cancellation:** ANC and ENC for clear communication.
- **40+ Hours Battery Life:** Long-lasting gaming sessions.
- **Broad Compatibility:** Works with PC, PlayStation, and Bluetooth devices.

Item	Specification
Connectivity	BLE 5.3, Wireless 2.4GHz (USB-A), USB audio
Compatibility	PC and PS 4&5, BT devices, Switch through BT
Dimension (L x W x T)	186x 184 x 82 (mm)
Weight	300g
Play time (hr)	40+
Driver specification	<ul style="list-style-type: none">• Size: 40 mm• Frequency response: 20 Hz ~ 20k Hz• Sensitivity: 115 dB SPL/mW
Microphone specification	Boom frequency response: 100 Hz~ 10k Hz ANC/ENC mic frequency response: 100 Hz~ 10k Hz

SMART ACCESS





Walle-S | Smart AI Door Lock

Experience a touch-free, in-stride unlocking convenience enhanced by high-precision 3D facial authentication

Main Features

- In-stride facial authentication
- 3D liveness detection
- Proximity detection
- Remote face enrollment
- Battery monitoring
- Video + 2-way audio
- Matter integrated



Item	Specification
Connectivity	WiFi, BLE 5.0, Thread (WiFi-6 option)
Power Source	Re-chargeable Battery pack
Weather Resistance	IP65
Access Control	<ul style="list-style-type: none">• Structured light 3D FA• Passcode/ NFC• Lock/ Unlock (Local/ Remote)
Facial Recognition dist.	< 1.5m
Others	<ul style="list-style-type: none">• Tamper protection• Buzzer (sound indication)• LED Indication
Dimension (L x W x T)	Exterior lock: 172.6 x 74.2 x 28 (mm) Interior lock: 184 x 75 x 36.2 (mm)



Scott-M | The Smart Access

Introducing a Smart Reader Equipped With Multi-factor Authentication

Main Features

- High-precision 3D AI facial recognition
- PIN code access
- Mobile unlock
- NFC
- Human presence detection
- Anti-Spoofing
- Compatible with Matter
- WiFi 6 TWT power saving



Item	Specification
Internet Connectivity	Bluetooth 5.0
Power Source	CR123A Battery * 3
Weather Resistance	IP65
Access control method	<ul style="list-style-type: none">• 3D Facial Recognition• Passcode• NFC• Unlock by phone
Facial recognition dist.	< 1.5m
Others	<ul style="list-style-type: none">• Accelerometer (Tamper protection)• Buzzer• Indication LED
Dimension /ID	L: 105mm, T:35mm, W: 67mm



Smart Doorbell: Buzz-HaLow

WiFi Halow-Enhanced Connectivity for a seamlessly protected Home

Main Features

- Long Range Wireless High Bandwidth: 802.11ah WiFi Halow
- Better Wireless Penetration Trough Objects &Walls
- Object Detection
- Wide-Range Field of View (178°)

Item	Specification
Wireless Connectivity	IEEE 802.11ah WiFi HaLow
Ring Chime	Mechanical / Wireless Ring Chime
Camera	4MP RGB Sensor
Field of View	178° H+V (Fisheye)
Video	<ul style="list-style-type: none">• HD 1200 x 1600, up to 30 frames/sec• H.264 encoding, HDR• Monochrome Night Vision
Motion Detection	Computer Vision at doorbell
Audio	Two-way talk with noise reduction & echo cancellation
Weather Resistance	IP65
Operating temperature	-5°F to 120°F (-20.5°C to 48.5°C) Weather Resistant
Dimension	124.3 mm (L) x 63mm (W) x 28mm (T)



Model	Vandal-Dome (Outdoor)	Mini Dome (Outdoor)	Box Type (Indoor)
Item	Specification		
Image Sensor	Up to 4K STARVIS image sensor with 0.001 Lux (B/W)	5MP@30fps NIR enhanced image sensor	2MP@30fps STARVIS image sensor with 0.01 Lux (B/W)
Video	H.264/H.265/MJPEG multiple streams	H.264/H.265/MJPEG multiple streams	H.264/H.265/MJPEG multiple streams
FOV	H : 106 °	D : 122 °	D : 122 °
Audio	Build MIC and audio I/O	Line In/Line Out	MIC In/Line Out
Network	Ethernet 802.3 100Base-T	Ethernet 802.3 100Base-T	Ethernet 802.3 100Base-T
Power	PoE 802.3af / 12V DC-IN	PoE 802.3af / 12V DC-IN	PoE 802.3af / 12V DC-IN
Protection	IP66, IK10	IP66, IK10	N/A
Dimension	148(D)x119(H) mm	120(D)x105(H) mm	114(L)x55.4(W)x55.4(H) mm
Communication	N/A	ONVIF Profile S/G/T	ONVIF Profile S/G/T
Others	Support Alarm I/O	N/A	Analog Video: CVBS Out

PRODUCTIVITY





Waterproof Wireless Keyboard

Experience the evolution with our sealed wireless keyboard, featuring an intuitive touchpad

Main Features

- **Refined Sealed Design:** Crafted with water/dustproof 0.07mm thin PU layers for ultimate protection without sacrificing typing experience.
- **Sleek & Portable:** Our 5mm ultra-thin keyboard is effortlessly lightweight for on-the go convenience.
- **Efficient Connectivity:** Extreme low-power Bluetooth LE 5.0 compliant radio solution ensures a secure, energy-efficient connection.
- **Adjustable Backlit:** Easily switch between three levels of white LED backlit for optimal visibility.
- **Integrated Touchpad:** High-res clickable touchpad for intuitive navigation.
- **Easy Maintenance:** Resistant to liquids and alcohol, it ensures simple cleaning with water or alcohol wipes.



True 4K Follow Me Camera

Features auto-correcting views, dynamic tracking, and gesture controls for enhanced clarity and ease

Item	Specification
Frame rate	4K30fps MJPEG / H.264 / H.265 (WFI only)
Auto focus	VCM w TOF in 300ms (10lux)
CCM optical	FOV D73.6° / H64.2° / V36.2°
Motorization	2 axis BLDC on pitch (135o) & yaw (300o) axis
AI tracking	<ul style="list-style-type: none">Follow meAuto-framingGestureWhite board
Connectivity	<ul style="list-style-type: none">UVC1.1RTSP ONVIFWiFiBLE remote
Audio	2 DMIC / ENC codec

Main Features

- Exquisite 4K Creator Cam with privacy cover: 2023 IF Design
- Accurate Face-AE/AF feature: adaptive 0.7T AI SOC
- True 4K portrait: Support OBS format
- Plug-in I/O of audio jack/cold shoe
- BLE remote

1" Lossless 4K Streaming Cam

Elevate visuals, boasting robust low-light performance and AI-enhanced 4K clarity for streaming and recording in any demanding settings

Main Features

- **Impressive Low-Light Quality:** Capture superior images in dim conditions with fast autofocus (<300ms) and high sensitivity (40dB at 10 lux), ensuring clear content in any lighting.
- **Accurate Face/Whiteboard Detection:** Customized AI technology detects faces and whiteboards accurately, making it ideal for presentations and virtual meetings.
- **True 4K Portrait:** Record in true 4K resolution, ideal for portrait mode and supported by OBS format for easy broadcasting.
- **Versatile Video Streaming:** Offers flexibility in streaming setups with WIFI, HDMI, and USB connectivity options.
- **Enhanced Audio/Control Integration:** Accommodates audio input with a jack and cold shoe mount, and includes a BLE remote for convenient wireless control.





Haptic Force Touchpad | Precision at Your Fingertips

Step into the future with our state-of-the-art touchpad, where sensitivity meets precision for an unmatched user experience

Main Features

- **Cutting-Edge Sensing:** Offers consistent, precise click response everywhere.
- **Uniform Touch:** Ensures an intuitive interaction every time.
- **Custom Haptic Feedback:** Fine-tune to your touch preference with our advanced algorithm.
- **Business-Grade Tool:** Elevates design and engineering work with its precision.
- **Enhanced Interface:** Upgrades your product with a superior user touch experience.



Audio Dock

Empowered personal hybrid workspace and room collaboration

Item	Specification
Video output	HDMI 2.1 DisplayPort 1.4
I/O Ports	USB-C Upstream (PD charging, up to 85 W) HDMI 2.1 x 1 DisplayPort 1.4 x 1 USB-A 3.1 Gen 2 x 2 (Front x 1, Rear x 1) USB-C 3.1 Gen 2 x 1 Audio Jack x 1 DC-in Jack x 1
Top button	Mute x 1 Volume up x 1 Volume down x 1 Hang up/Pick up x 1

Item	Specification
Speaker	25W (12.5Wx2)
Microphone	Directional Mic x 4
Dimension	145 x 114 x 108mm
Power Adaptor	180W
Noise Control	1. Wind Noise Reduction Filter 2. Acoustic Echo Cancellation (AEC) 3. Noise Suppression (NS) 4. Far-Field voice Pick up (FFP)



iNTELLi DiAL Controller

Quick gesture companion for photo, video, music creation and even more

Item	Specification
Interface	Wired USB 2.0
Buttons / Display	5 Programmable Buttons (Include 2 force sensing buttons)
Dial	2 Dial (Interchangeable Fine tune module x2; Coarse Dial x1)
Connectivity	USB C; Extension cable (optional)
Support OS	Windows
Plugins Support	Yes
Indication Lighting	Yes

Main Features

- Provides two Interchangeable Fine tune modules and one Coarse Dial
- Supports 5 programmable buttons include 2 force sensing buttons
- Supports USB 2.0 connection

HMI Controller 1 & 2

Optimize control with the HMI controller duo: featuring an optical trackball and an OLED display



Controller 1

Controller 2

Item (HMI Controller 1)	Specification
Trackball Type	Optical sensor
Trackball Diameter	40 mm
Trackball resolution	400 CPI
Wireless working distance	Line of Sight 10 meters
Connectivity	<ul style="list-style-type: none">Proprietary 2.4 G (Nano USB Dongle)BLE
Battery Type	AA x 1
Battery Life	6 months
Programmable buttons	Programmable buttons, set by creator center software

Item (HMI Controller 2)	Specification
Wireless working distance	Line of Sight 10 meters
OLED Display	<ul style="list-style-type: none">Support Text and symbols (256 x64 pixel)Pixel size : 0.312*0.303 mm
Cable included	USB-A to USB-C Right Angle 90° X 1
Connectivity	USB or BLE
Battery Type	<ul style="list-style-type: none">Rechargeable Li-Por battery3.7V, 1000 mAh
Working hour per charge	Over 30 hours, for continuous usage
Programmable buttons	8 programmable buttons with 2 key sets
Mode button	<ul style="list-style-type: none">1 mode buttons (Under the wheel)Support up to 4 modes



Contact us: marketing@primax.com.tw

Address: No. 669, Ruiguang Rd, Neihu District, Taipei City, 114

www.primax.com.tw